



HORN POND FISH PASSAGE





HORN POND FISH PASSAGE

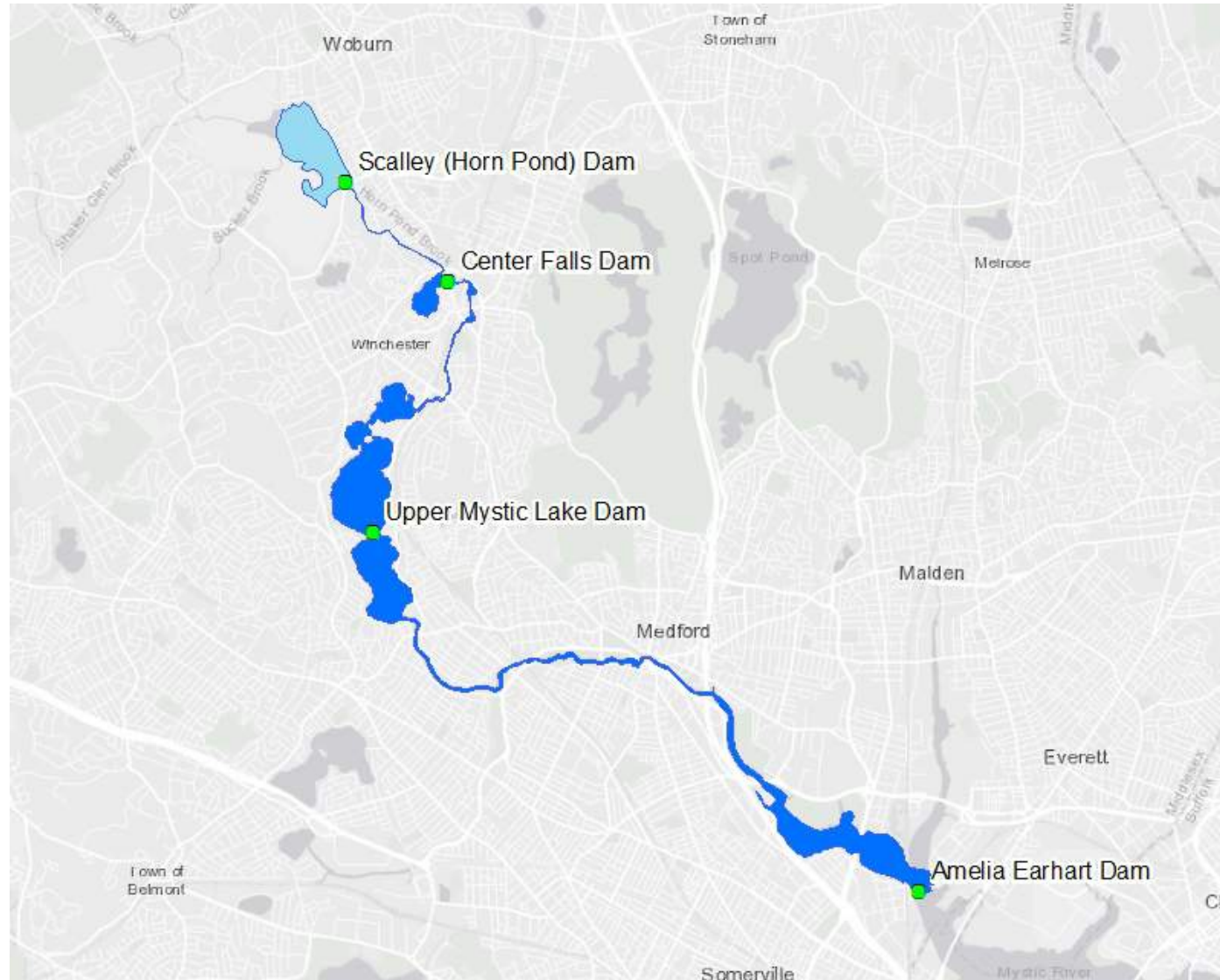


The City of Woburn is constructing a fish passageway at the Horn Pond Dam outlet*. The fish passage will create a means for river herring (alewife and blueback herring) and American eel to migrate to and from Horn Pond via Horn Pond Brook.

*WORK IS BEING FUNDED THROUGH NATURAL RESOURCE DAMAGES (NRD) FUNDING



FISH PASSAGE CURRENT STATE





HORN POND SPILLWAY





FISH PASSAGE



What is fish passage?



Connects water bodies that were separated by obstructions such as dams, culverts, levees, and more



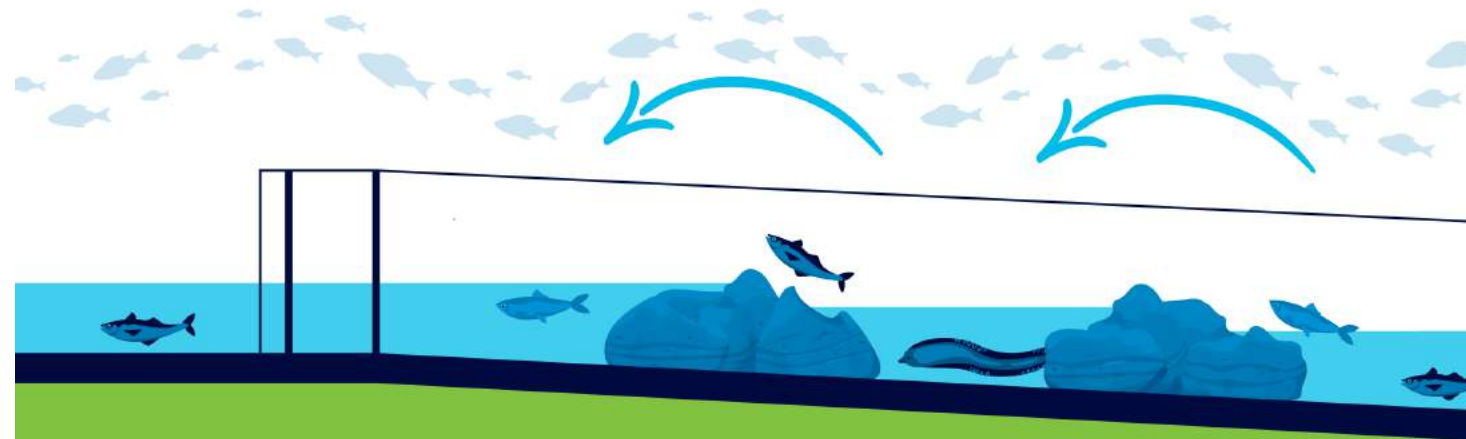
Facilitates access to habitats necessary to complete a life cycle, including spawning grounds and food sources



Provides safe passage for fish, eels, and other marine species



Can be used by ecologists to monitor the health of waterways and fish populations



What are the benefits of fish passage?



Can be paired with outdoor recreation space and viewing areas



Can help prevent declining fish population levels, including for at-risk and listed species



Offers educational opportunities to learn about fish passage

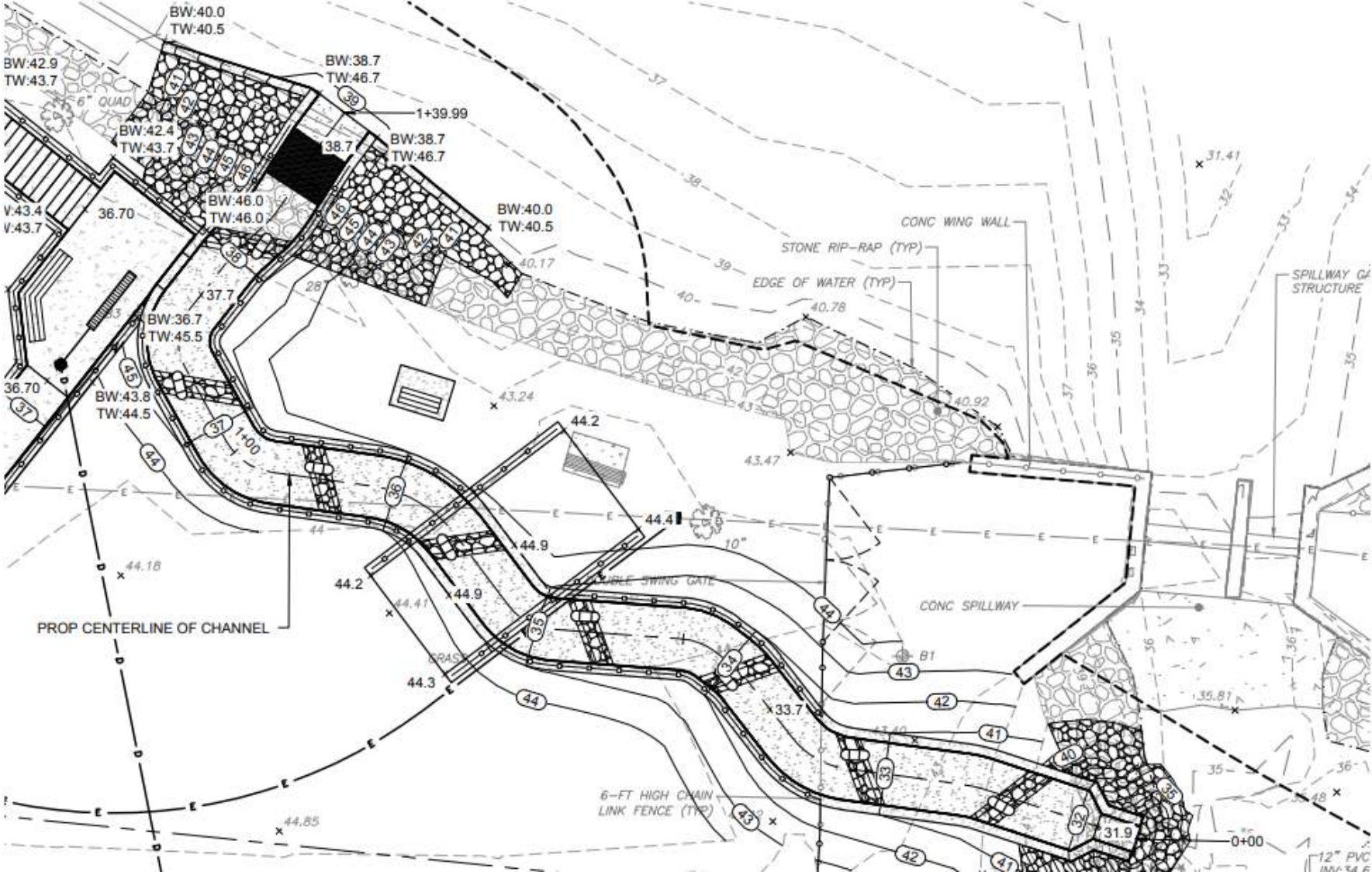


Removing barriers can improve public safety, climate resilience, and help restore river ecosystems

Source: U.S. Fish & Wildlife Service, "What is Fish Passage?" [fws.gov/story/what-fish-passage](https://www.fws.gov/story/what-fish-passage)

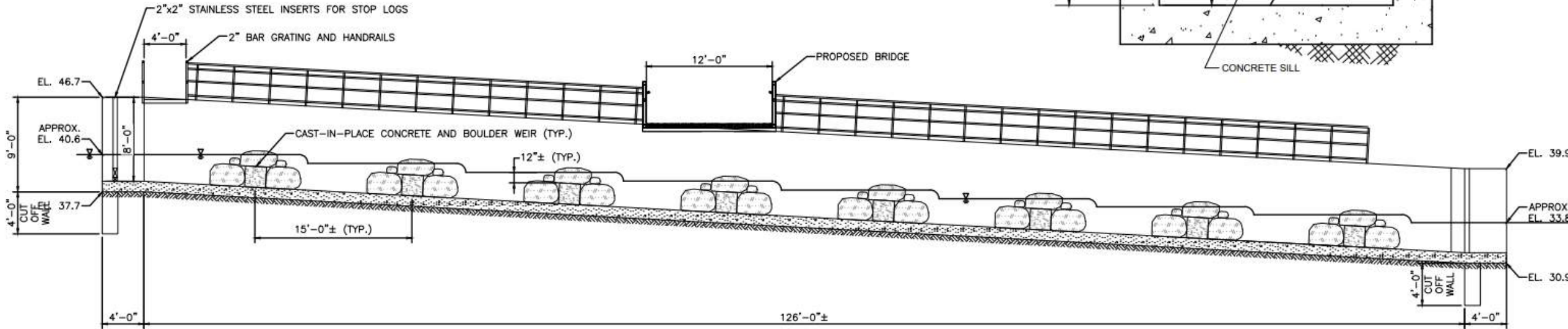
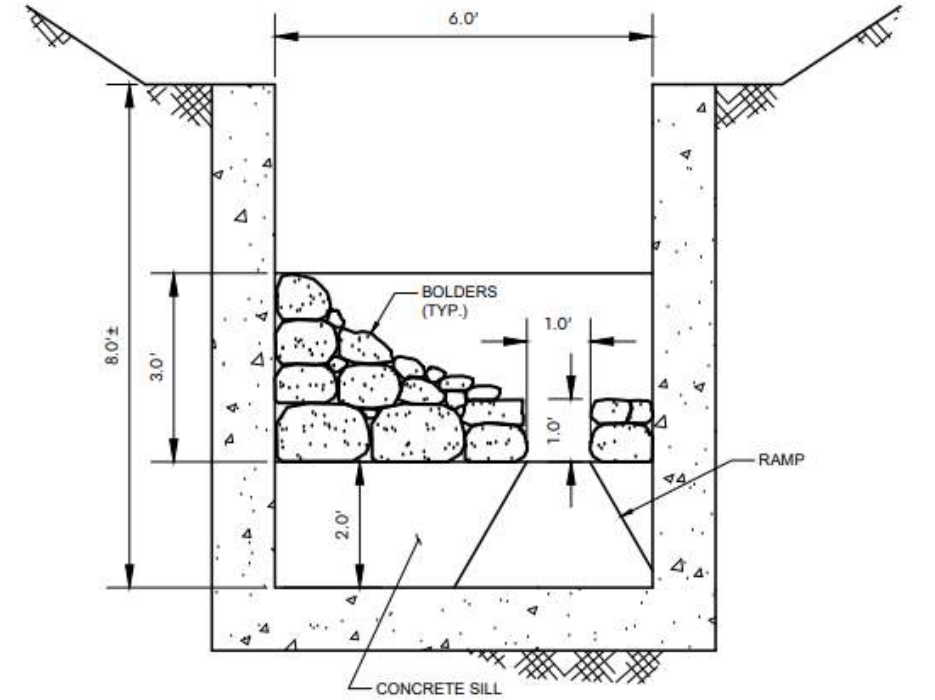


HORN POND FISH PASSAGE





FISH PASSAGE DETAILS

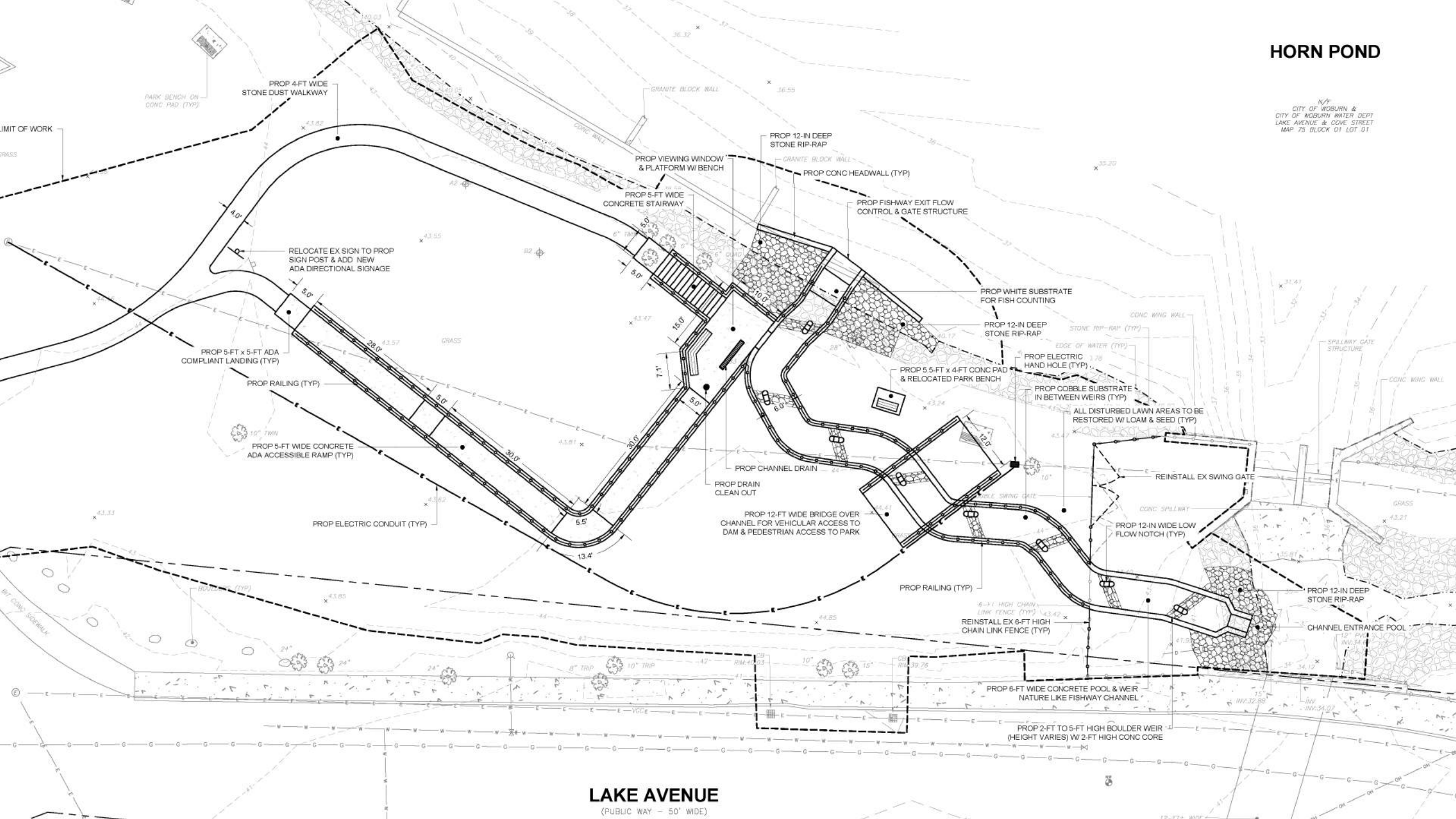


LONGITUDINAL SECTION

SCALE: 1' = 60'

HORN POND

N/T
CITY OF WOBURN &
CITY OF WOBURN WATER DEPT
LAKE AVENUE & COVE STREET
MAP 75 BLOCK 01 LOT 01



LAKE AVENUE (PUBLIC WAY - 50' WIDE)



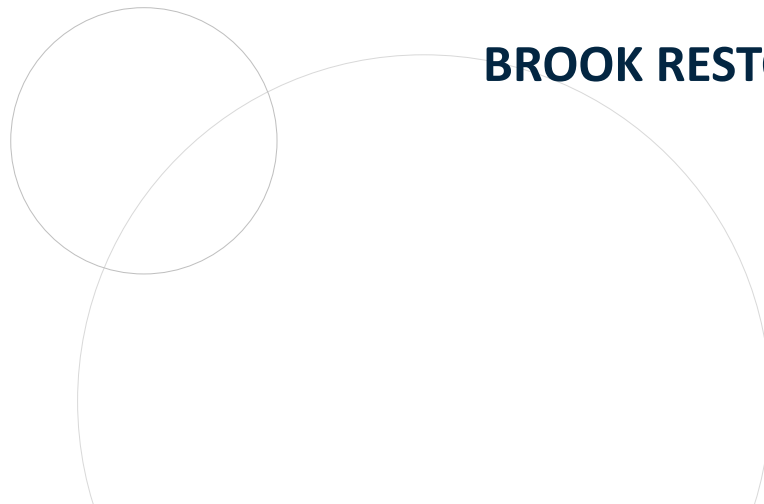
ASSOCIATED PROJECT COMPONENTS



**STORMWATER
FEATURE**



BROOK RESTORATION

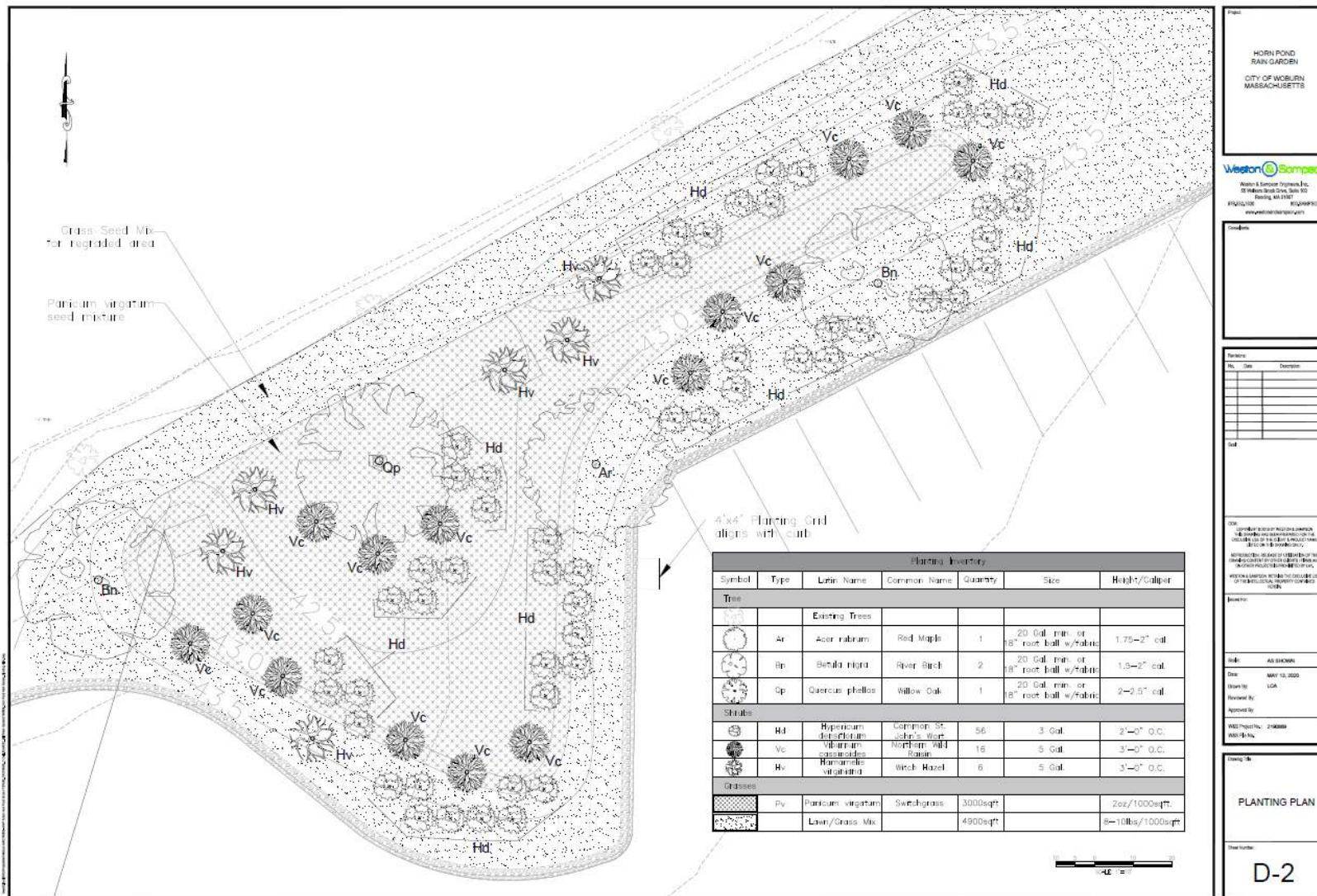




STORMWATER FEATURE

Capture and treat stormwater from parking

Reduce pollution



HORN POND RAIN GARDEN
CITY OF WORCESTER MASSACHUSETTS

Weston & Sampson, Inc.
20 Malvern Street, Suite 100
Worcester, MA 01602
www.westonandsampson.com

Scale: AS SHOWN
Date: MAY 13, 2020
Drawn by: GJA
Reviewed by: W&S
Approved by: W&S

PLANTING PLAN

Sheet Number: D-2

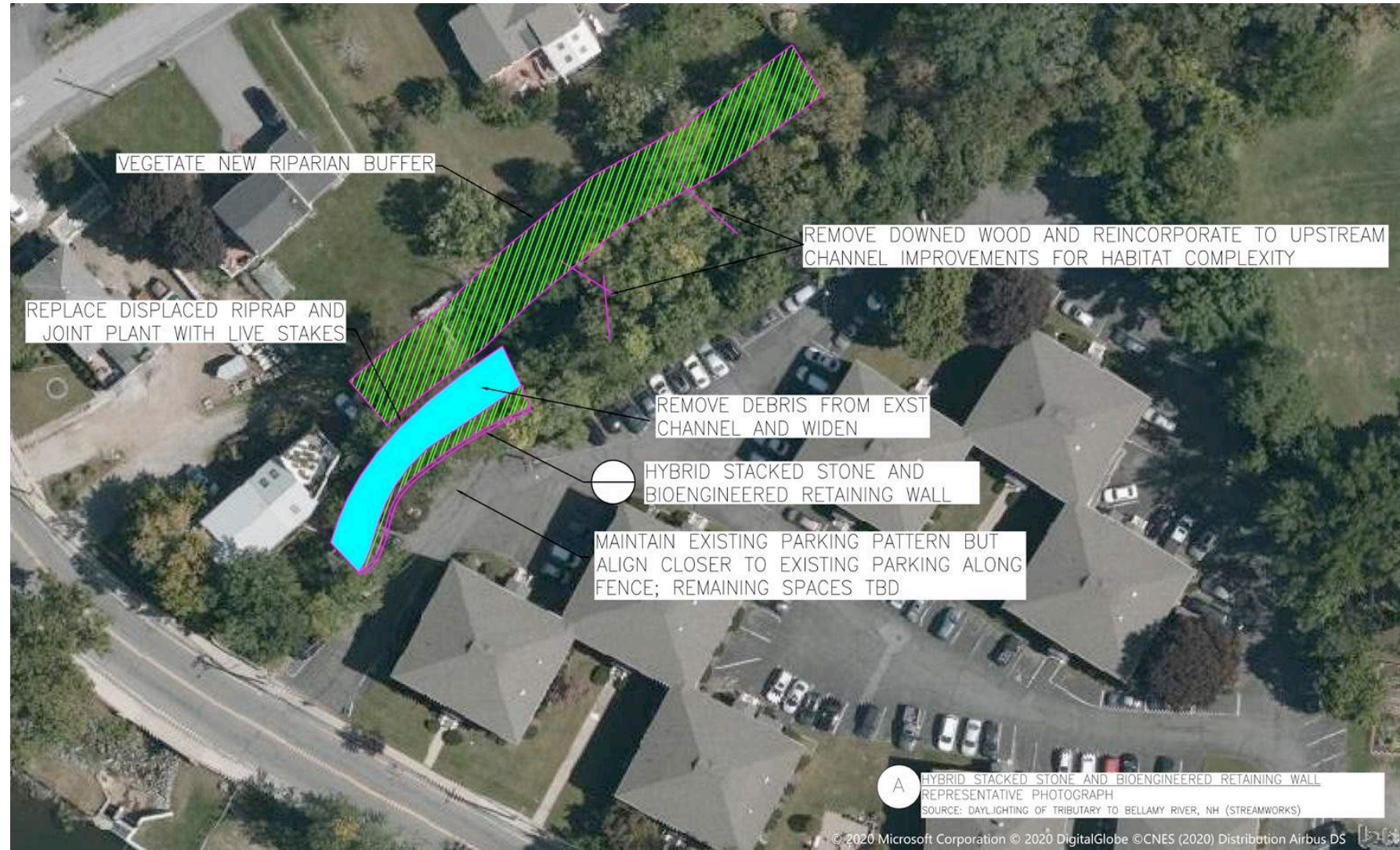


HORN POND BROOK IMPROVEMENTS

Reduce flooding

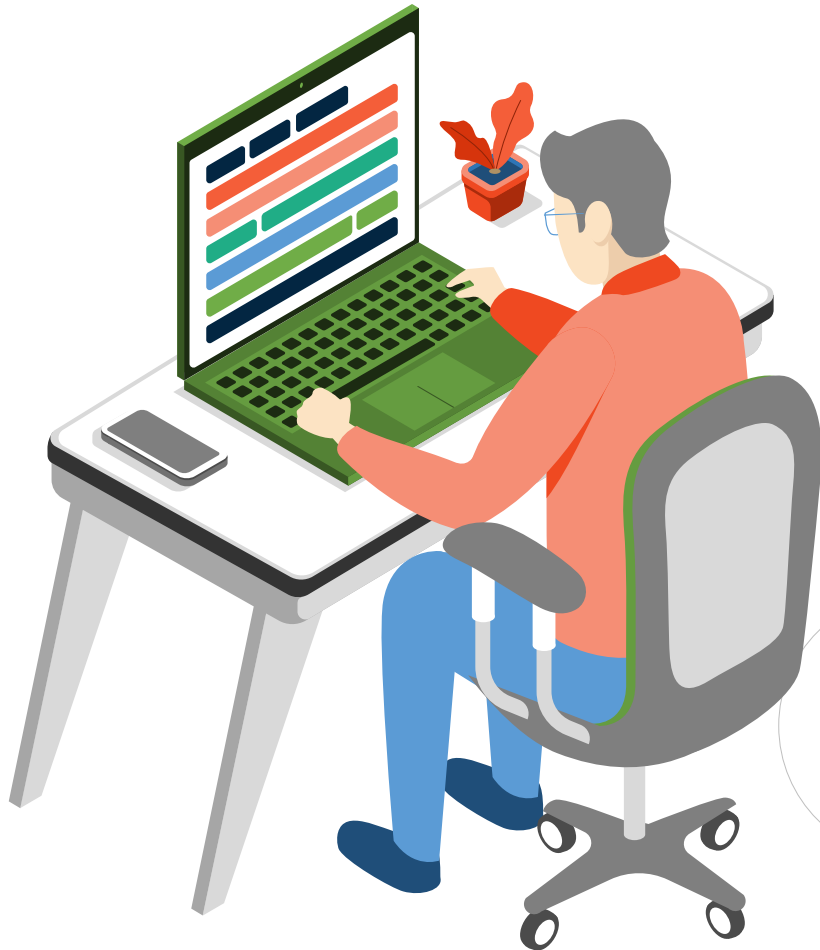
Restore natural flow

Enhance fish habitat





NEXT STEPS



PERMIT PHASE ONGOING

FINALIZE DESIGN

CONSTRUCTION

STAY CONNECTED

- Check website for updates
- Submit questions and comments



THANK YOU



Weston & SampsonSM

