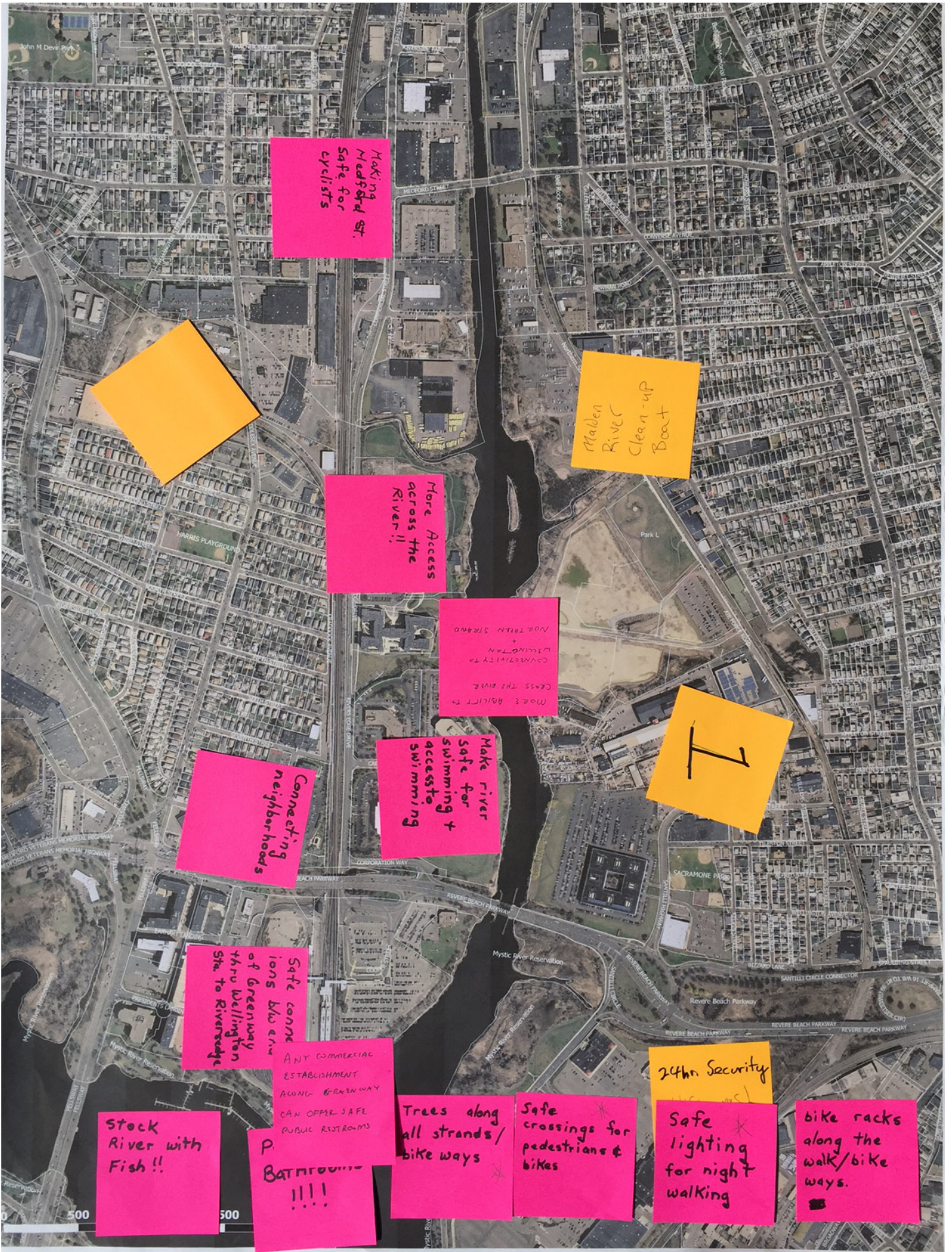


MALDEN RIVER GREENWAY VISION PLAN
Design Workshop Map Notes
August 8, 2017



Making
Maddox St.
Safe for
cyclists



Malden
River
Clean-up
Boat

More Access
across the
River !!

More Access to
Cross the River
Wilmington
+
North Strand



Make river
safe for
swimming +
access to
swimming

Connecting
neighborhoods

Safe connections
between
thru Wellington
St. to Riverside

ANY COMMERCIAL
ESTABLISHMENT
ALONG GREENWAY
CAN OFFER SAFE
PUBLIC RESTROOMS

Stock
River with
Fish !!

P
Bathrooms
!!!!

Trees along
all strands/
bike ways

Safe
crossings for
pedestrians &
bikes

24hr Security

Safe
lighting
for night
walking

bike racks
along the
walk/bike
ways.



+Public Art
+Sanding
+Picnic Area

+Rowing

Malden Center
Need connection
to Malden
Center -
Good for
walkers/bikers to
go east, stop at.

Malden Center
Bike rental?
Boat rental?
to get from
Malden to Lynn,
etc.

2

Can generally
walk to good
to shoreline
for the paths
-Part of - Master
Plan?

Idea?
+Angling?
-Canals

Water Quality
CO2 +
Safety
-needs help
incentives to
help clean

+Natural Edges-
-Vegetation
-Constructed walkway
-Art work
-'walkways'

Improve
Pipercin
Buffer
Natural edges

Dredge
R.Ve.
rid of invasives!

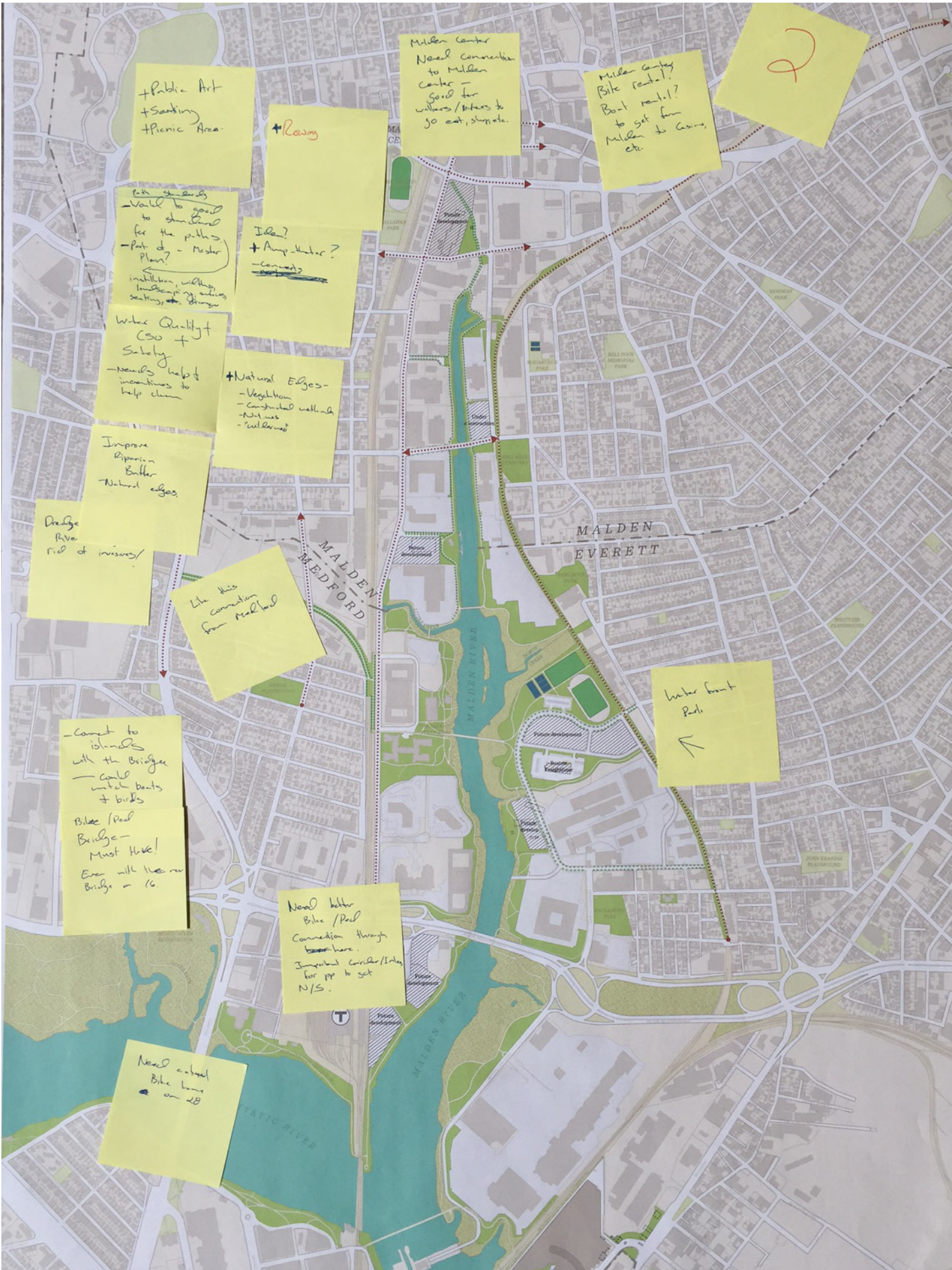
Like this
connection
from Medford

-Connect to
islands
with the bridge
-could
walk boats
+ birds
Bike / Ped
Bridge -
Must Have!
Even with the new
bridge in '16

Need better
Bike / Ped
connection through
here.
Improved canals/paths
for ppl to get
N/S.

Need central
Bike lane
on EB

Water front
Park
←



← Four main
Mile Hike

MRA
Malden
redevelopment
authority

Historical
Markers
interpretive
signs
tell the history
of the Malden
River.
(potential cultural
council funds)

interpretive
apps
and
wayfinding.

MVDC
MYSTIC
VALLEY
DEVELOPMENT
COMMISSION
can it be
mobilized?

"excursion
boat" //

More greenways
(catalytic) like
the row here →

Edible landscaping
like the apple trees
along Mystic &
Charles Grape
vines along fences.
(People don't
leave the vines)

HABITAT
THINK ABOUT
SPECIES
RELATIVE
TO PLANT
MATERIAL

6

Make the
water front
in Everett
a public
park - don't
put it behind
office buildings

Need a stronger
drive to bring
ES community
to the table

abandoned
archival
communications
found

Don't put the
line

low cost
park
restoration

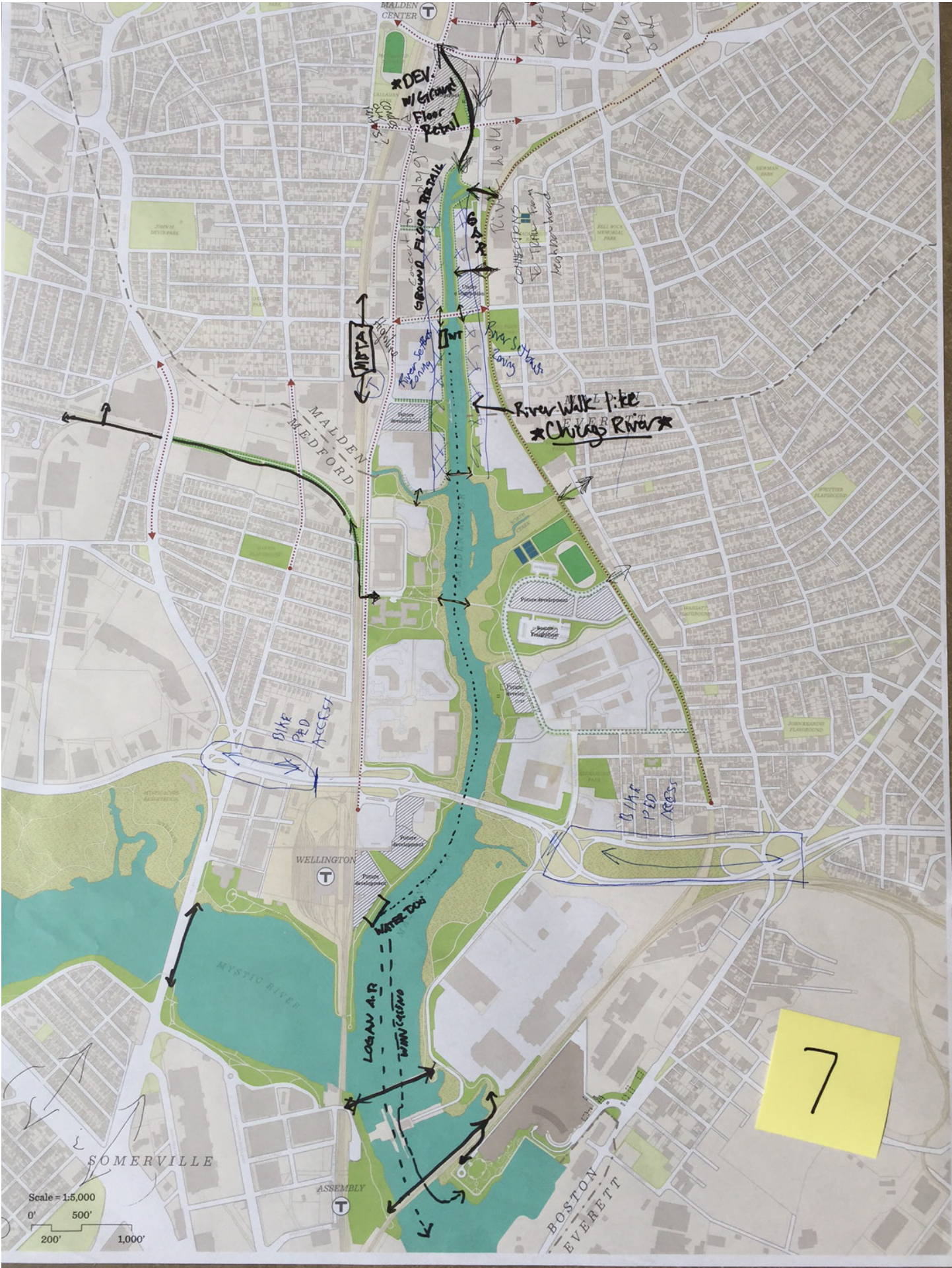
Consult the
community to
make & planning

this is the
best
it will be GREAT

correct
location

SOMERVIL

Scale = 1:5,000
0' 500'



MALDEN CENTER

MALDEN MEDFORD

WELLINGTON

SOMERVILLE

ASSEMBLY

BOSTON
EVERETT

Scale = 1:1,500
0' 500'
200' 1,000'

7

*DEV. w/ Ground Floor Retail

GROUND FLOOR RETAIL

River Walk Pike
Chung River

LOGAN A.R.
WATER DOOR

BIKE PED ACCESS

BIKE PED ACCESS

CONNECTIONS TO TRAIL FROM HIGHWAY

River Walk

Private Development

Private Development

Private Development

Private Development

Private Development

Private Development

Private Development

Private Development

JOHN W. BRYAN

JOHN W. BRYAN

JOHN W. BRYAN

JOHN W. BRYAN

JOHN W. BRYAN

JOHN W. BRYAN

JOHN W. BRYAN

JOHN W. BRYAN

JOHN W. BRYAN

JOHN W. BRYAN

JOHN W. BRYAN

JOHN W. BRYAN

JOHN W. BRYAN

JOHN W. BRYAN

JOHN W. BRYAN

JOHN W. BRYAN

JOHN W. BRYAN

JOHN W. BRYAN

JOHN W. BRYAN

JOHN W. BRYAN

JOHN W. BRYAN

JOHN W. BRYAN

JOHN W. BRYAN

JOHN W. BRYAN

JOHN W. BRYAN

JOHN W. BRYAN

JOHN W. BRYAN

JOHN W. BRYAN

JOHN W. BRYAN

JOHN W. BRYAN

JOHN W. BRYAN

JOHN W. BRYAN

JOHN W. BRYAN

JOHN W. BRYAN

JOHN W. BRYAN

JOHN W. BRYAN

JOHN W. BRYAN

JOHN W. BRYAN

JOHN W. BRYAN

JOHN W. BRYAN

JOHN W. BRYAN

JOHN W. BRYAN

JOHN W. BRYAN

JOHN W. BRYAN

JOHN W. BRYAN

JOHN W. BRYAN

JOHN W. BRYAN

JOHN W. BRYAN

JOHN W. BRYAN

JOHN W. BRYAN

JOHN W. BRYAN

JOHN W. BRYAN

JOHN W. BRYAN

JOHN W. BRYAN

JOHN W. BRYAN

JOHN W. BRYAN

JOHN W. BRYAN

JOHN W. BRYAN

JOHN W. BRYAN

JOHN W. BRYAN

Bike Lane
Commercial
Street

Schools have
access to river
- Beebe school
- Malden
- others.

PATH to follow
OLD RIVER

DCR -
TREAT
STORMWATER

open AS
GREEN can be
100!

BRING
COMBINED
PROPERTIES

MAP OLD
ALIGNMENT
OF RIVER

N STRAND
QUICK WIN
CONNECTION

ENGAGE
ANTHONY'S

RAIL TRAIL
CONVERSION
TRANSFORMATION

8

LAND BOUND

MASS DEV
C-PAGE?

TRUCKS
ALONG
THE RIVER
BY NBHD

DEMAND
TO GET
DOWN THERE

KEY LINK





OAK GRAFT SECTION
COULD USE WALKWAY
ALONG RIVER

Also public event
Access around river
Increase property
value

Who owns the
river's edge?
Can boat walks
be put on the
edge or in the
river?

Music
Venue/
Festival
Area/
Band stand

NO HUMAN DRAINAGE
MAYBE
+
LITTLE PUBLIC ART/THINGS
COMMERCIAL/EDUCATIONAL

Boat
Launch

Boat-stand
on River

push MPE
do more

Allow Authority
to have River
side service...

Art-local
along
river ways

Public Boat
Launch...
(Don't drink
the water)

Not aiming
high enough:
- under access
- Coffee Shop
on River

to
get
access
along
entire
River

①
RACE TRACK
HERE

Access from
to super 88 to
I-93 Malden center
to exitment.

①
Access from
to Northern Street.

Public ART
sculpture...
①

Public
Signage
①

Provide tools +
advocacy for
road maps for
local residents
to lobby for
this.
- Tax Exempt...
- Zoning overlay
- Chapter 91
- New Development
- Zoning
- permit...

Public Parking
for families.
①

①
LIKE CONNECTICUT
AROUND MIDDLETON
ASSEMBLY

①
long wooded
walkway
thru wetland
and edges
(steep) along
river.