



Hurd Park Climate Resilient Hub

City of Woburn, MA

September 6, 2023



Project Team

City of Woburn

- **Scott Galvin**, *Mayor*
- **Jay Corey**, *City Engineer*
- **Jeff Dillon**, *Ward 3 Alderman*
- **Rory Lindstrom**, *Recreation Director*
- **Brian Nagle**, *Assistant Recreation Director*

Horsley Witten Group

- **Jennifer Relstab**, PE, *Project Manager*
- **Jonas Procton**, *Project Engineer*
- **Ellen Biegert**, *Landscape Architect*
- **Mike Easler**, *Landscape Architect*

Mystic River Watershed Assoc.

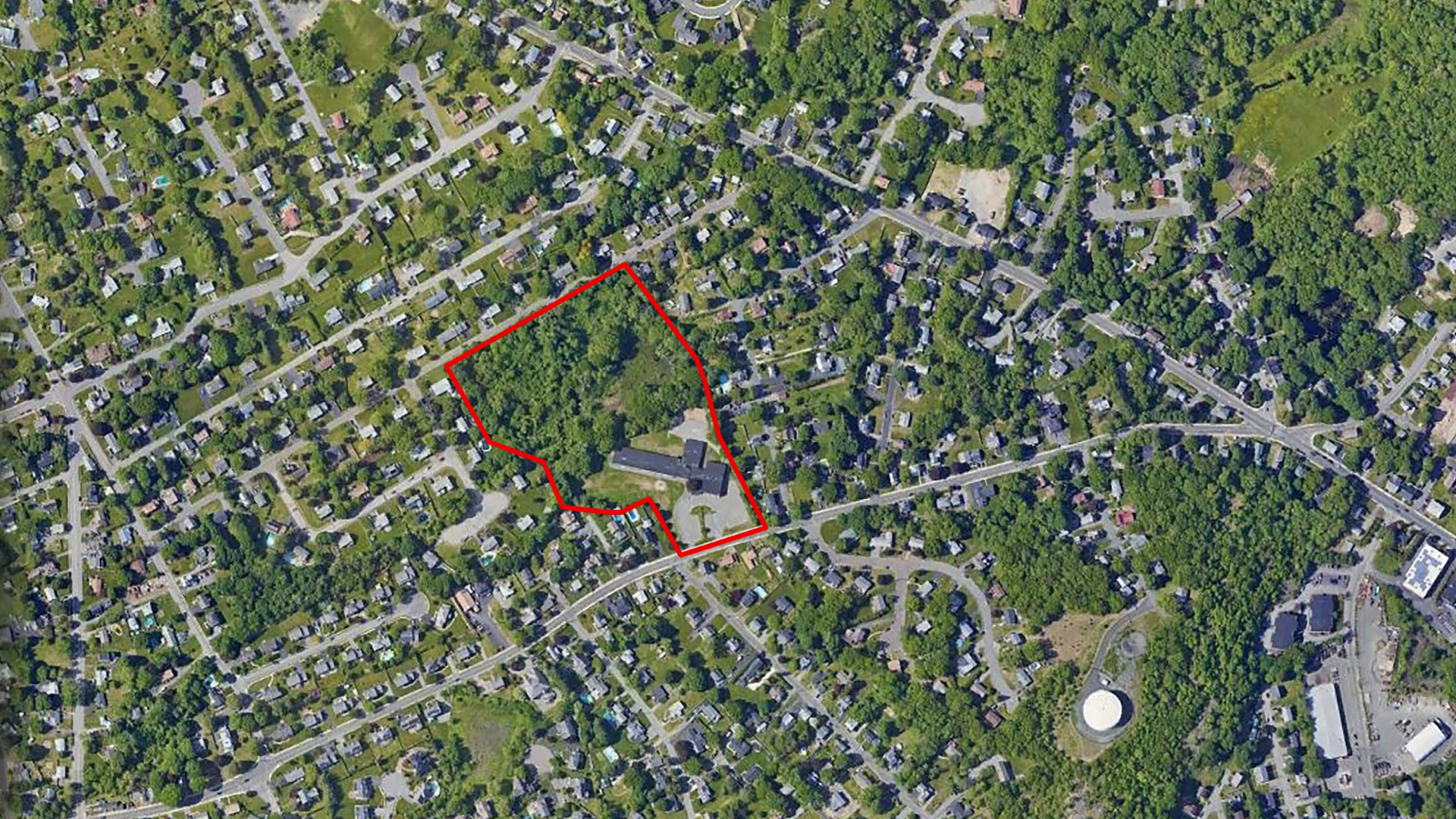
- **Daria Clark**, *Engagement Manager*
- **Catherine Pedemonti**, *Project Manager*

Community Engagement to date

- Lunch and Learn (Spring 2021)
- Public Meeting (Spring 2021)
- Conservation Commission (Spring 2021)
- Survey (2021 to present, over 700 responses)
- Park Public Meetings #1 and #2 (Feb + March 2023)



COMMUNITY
ENGAGEMENT TO
DATE



Aerial



Project Design Priorities

- Create a space that is accessible for people of all ages, abilities and diverse backgrounds.
- Design a climate resilient park that will provide flood mitigation, improve heat resilience and manage stormwater through nature-based solutions.
- Provide active and passive landscapes for visitors to promote public health and community well-being.

Project Scope

Background
& Analysis



Permitting

November 2023

- Survey
- Soil Evaluations
- Flow Monitoring
- Public Outreach

- Design Refinement
- Hydrologic and Hydraulic Modeling
- Invasive Management Plan

- Pre-permitting
- Coordination
- Permit Submittals
- and Hearings



LEGEND

	PROPERTY LINE
	CANOPY TREE
	LAWN
	LOW MOW / MEADOW
	BIORETENTION AREA
	ASPHALT PAVEMENT
	PLAY SURFACE
	PERMEABLE PATHWAY
	CONCRETE PATHWAY
	BOARDWALK
	SIGNAGE - WAYFINDING
	SIGNAGE - EDUCATIONAL
	CONSTRUCTED WETLAND
	WETLAND
	25' WETLAND BUFFER
	100' WETLAND BUFFER
	150' WETLAND BUFFER
	EXISTING STREAM LOCATION
	PROPOSED STREAM LOCATION
	200' RIVER FRONT BUFFER

SCALE:
1" = 50'
N 0' 50'



PARKING (PERMEABLE)
KIOSK / SIGNAGE
BENCH

STEPPING STONE PATH
CONSTRUCTED WETLAND

WAYFINDING SIGNAGE
EXISTING PATH

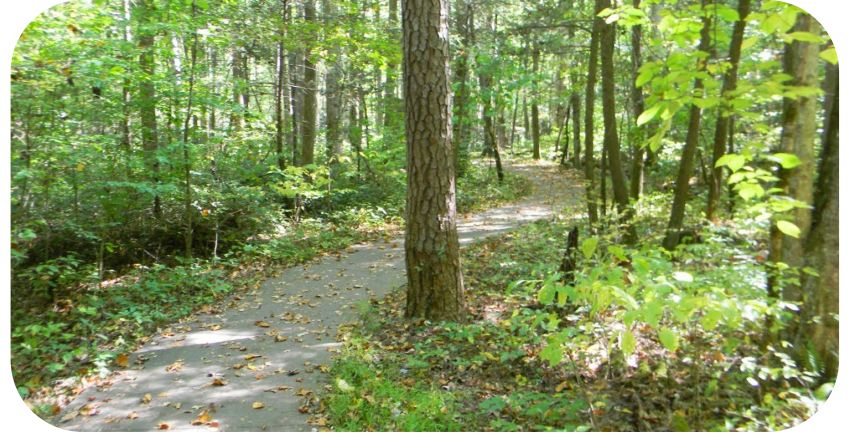
PROPOSED BROOK
ALIGNMENT
EXISTING BROOK
ALIGNMENT

LEGEND

	PROPERTY LINE
	CANOPY TREE
	LAWN
	LOW MOW / MEADOW
	BIORETENTION AREA
	ASPHALT PAVEMENT
	PLAY SURFACE
	PERMEABLE PATHWAY
	CONCRETE PATHWAY
	BOARDWALK
	SIGNAGE - WAYFINDING
	SIGNAGE - EDUCATIONAL
	CONSTRUCTED WETLAND
	WETLAND
	25' WETLAND BUFFER
	100' WETLAND BUFFER
	150' WETLAND BUFFER
	EXISTING STREAM LOCATION
	PROPOSED STREAM LOCATION
	200' RIVER FRONT BUFFER



Walking Paths and Boardwalks

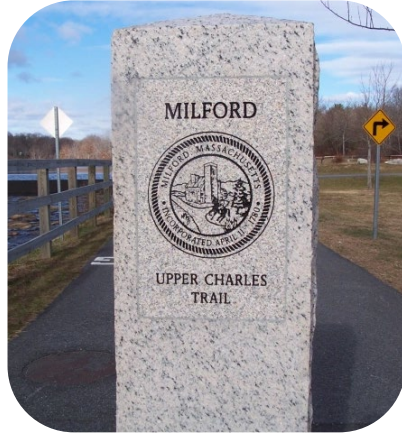


Stream Restoration and Stormwater





Wayfinding and Signage





PICNIC TABLES
 EXISTING TREE
 SHADE PAVILION
 MISTING STATION &
 WATER FOUNTAIN

OPEN GREEN

OPEN GREEN

BIKE RACKS
 BENCH, TYP.
 PARKING
 20 SPACES

SPLASH PAD
 "SPRAY GROVE"
 ACCESSIBLE PATH TO
 TOWER STRUCTURE
 PLAY SPACE
 INTEGRATED TREES
 SHADE STRUCTURES

BASKETBALL COURT
 BIORETENTION AREA

BEDFORD ROAD

LEGEND	
	PROPERTY LINE
	CANOPY TREE
	LAWN
	LOW MOW / MEADOW
	BIORETENTION AREA
	ASPHALT PAVEMENT
	PLAY SURFACE
	PERMEABLE PATHWAY
	CONCRETE PATHWAY
	100' WETLAND BUFFER
	150' WETLAND BUFFER

SCALE:
 1" = 20'
 N 0' 20'



Pavilion

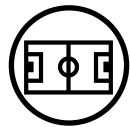


Parking





Active Open Space



Sport Court



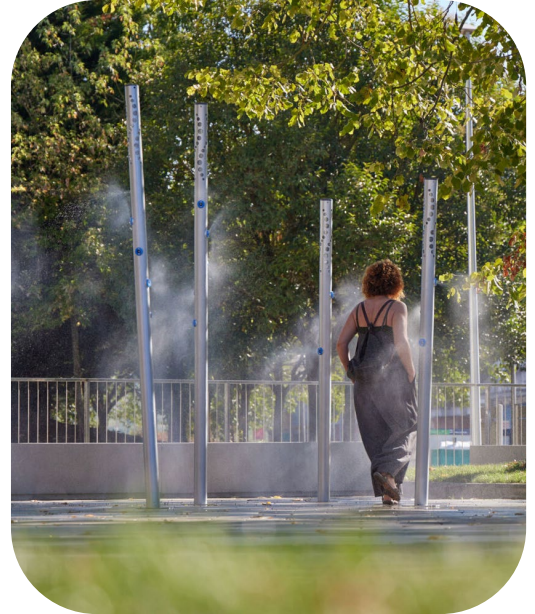


Inclusive Play Area





Heat Resilient Water Features





More Information at:

<https://www.woburnma.gov/government/recreation/hurld-park-vision/>

Thank you!