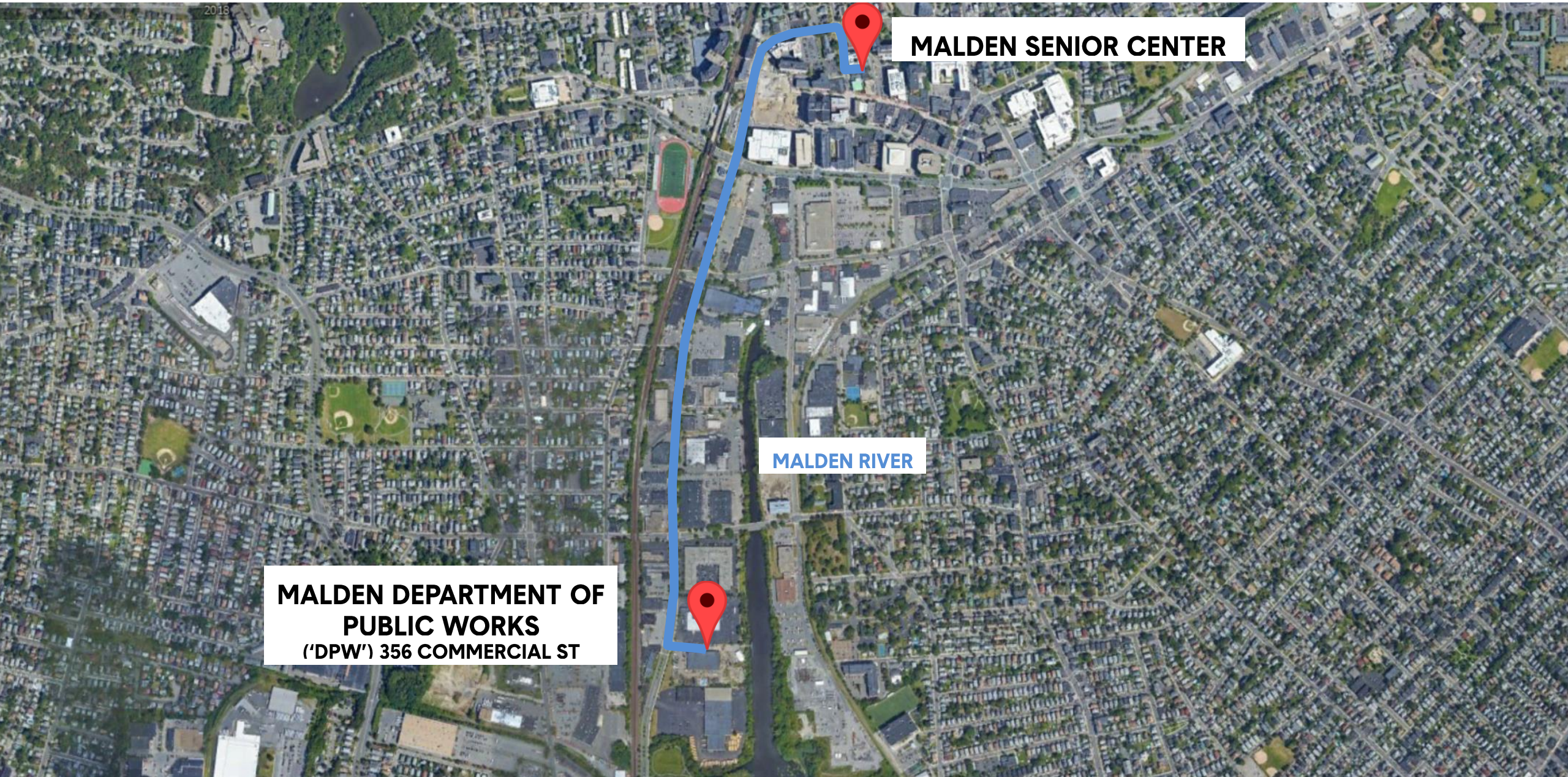




MALDEN WORKS
FOR WATERFRONT
EQUITY AND RESILIENCE

MALDEN WORKS FOR WATERFRONT EQUITY AND RESILIENCE: WHERE WE'RE HEADED



2018

MALDEN SENIOR CENTER

MALDEN RIVER

**MALDEN DEPARTMENT OF
PUBLIC WORKS
(“DPW”) 356 COMMERCIAL ST**

MALDEN RIVER PLANNING CONTEXT

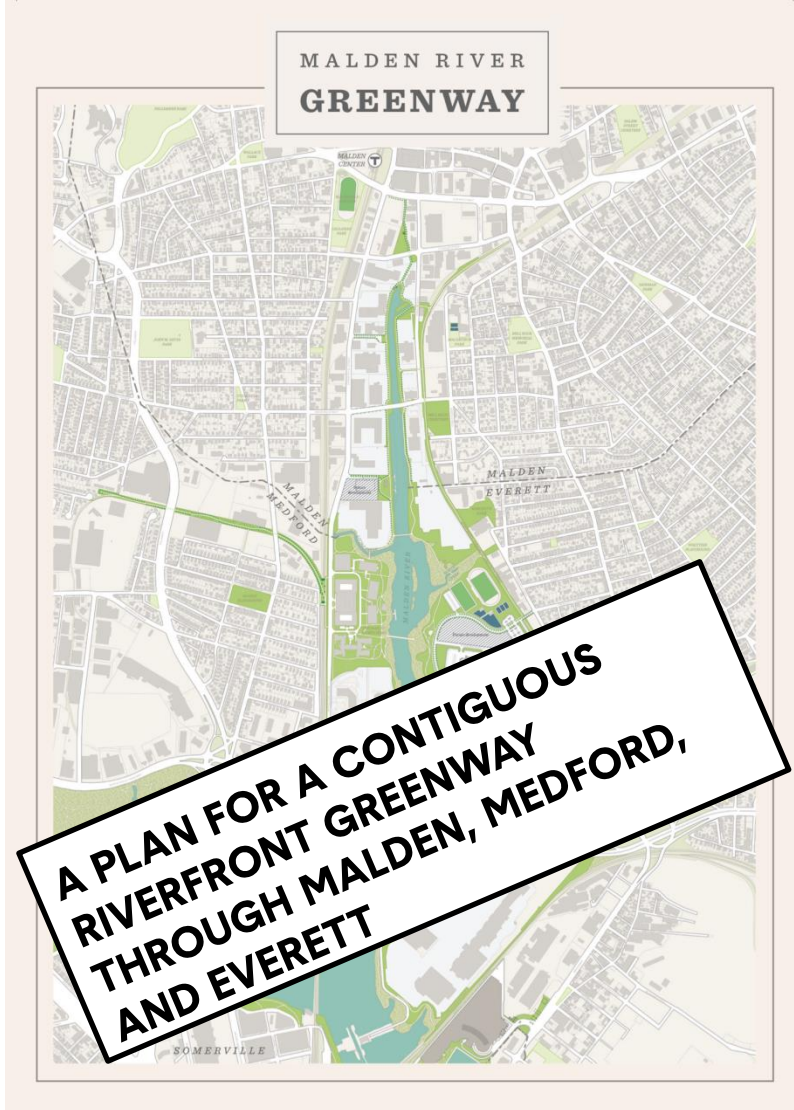
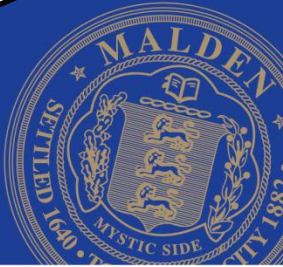


Open Space and Recreation Plan
Malden, Massachusetts
2017

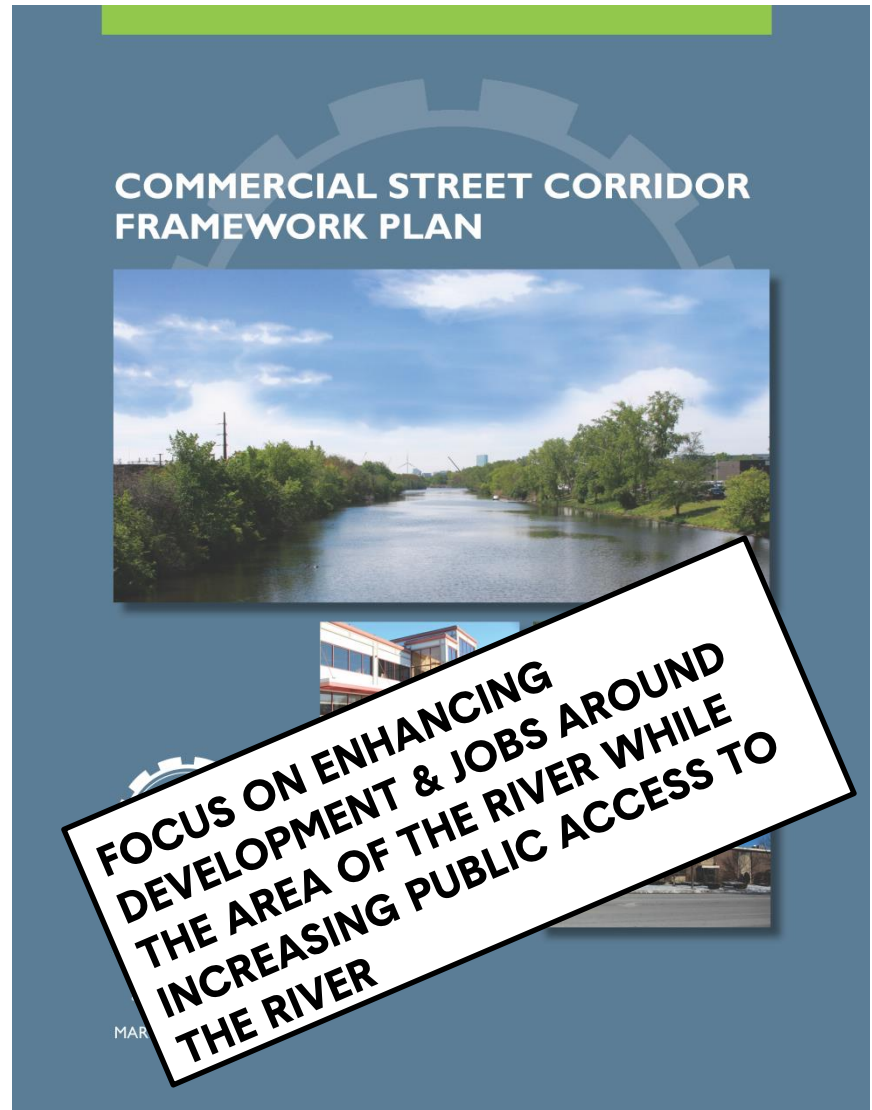


"DEVELOP THE MALDEN RIVER AS A NEW OPEN SPACE" IS LISTED FIRST AS A 'CRITICAL NEED'

Prepared by:
Malden Open Space Steering Committee
with assistance from the Metropolitan Area Planning Council
photos courtesy of City of Malden



A PLAN FOR A CONTIGUOUS RIVERFRONT GREENWAY THROUGH MALDEN, MEDFORD, AND EVERETT



FOCUS ON ENHANCING DEVELOPMENT & JOBS AROUND THE AREA OF THE RIVER WHILE INCREASING PUBLIC ACCESS TO THE RIVER

- MALDEN OPEN SPACE AND RECREATION PLAN. 2017
- MALDEN RIVER GREENWAY PLAN. 2018 (MYSTIC RIVER WATERSHED ASSOCIATION)
- COMMERCIAL STREET CORRIDOR FRAMEWORK PLAN. 2018

MALDEN RIVER PLANNING CONTEXT – WITHIN THE LARGER MYSTIC RIVER WATERSHED





MALDEN

MEDFORD

EVERETT

RIVER'S EDGE: 30 ACRE MIXED-USE DEVELOPMENT WITH COMMUNITY BOAT HOUSE AND RIVERWALK

RIVERGREEN: 1/2 MILE RIVERWALK AND 6 ACRE RECREATIONAL PARK




NEIGHBORING CITIES EVERETT AND MEDFORD HAVE GAINED GREEN OPEN SPACE ALONG THE RIVER AS PART OF MAJOR REDEVELOPMENT PROJECTS LIKE RIVER'S EDGE AND THE ENCORE CASINO

MALDEN RIVER PLANNING CONTEXT: IMPROVING PUBLIC ACCESS TO THE MALDEN RIVER



DPW

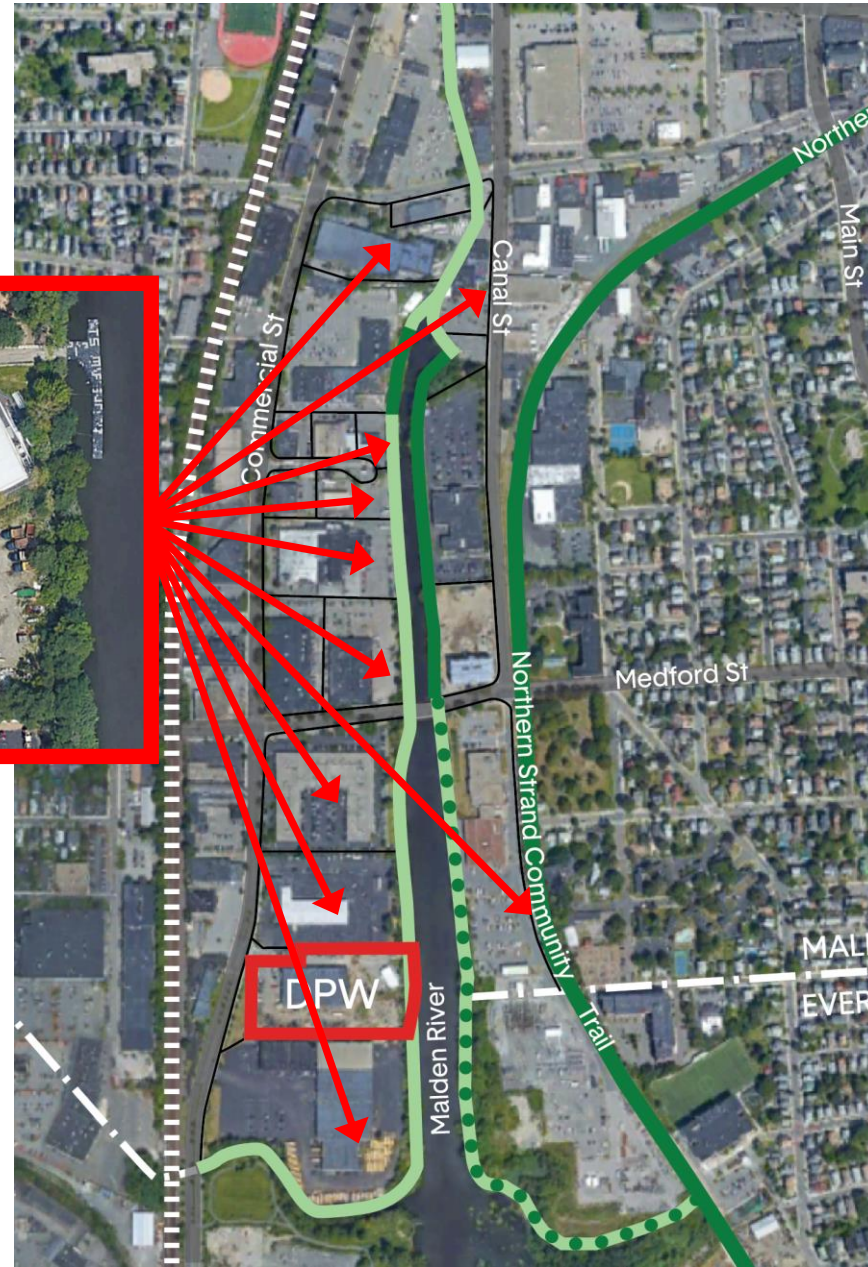
Status of Malden River Greenway paths

-  Existing path
-  In-progress path
-  Proposed path

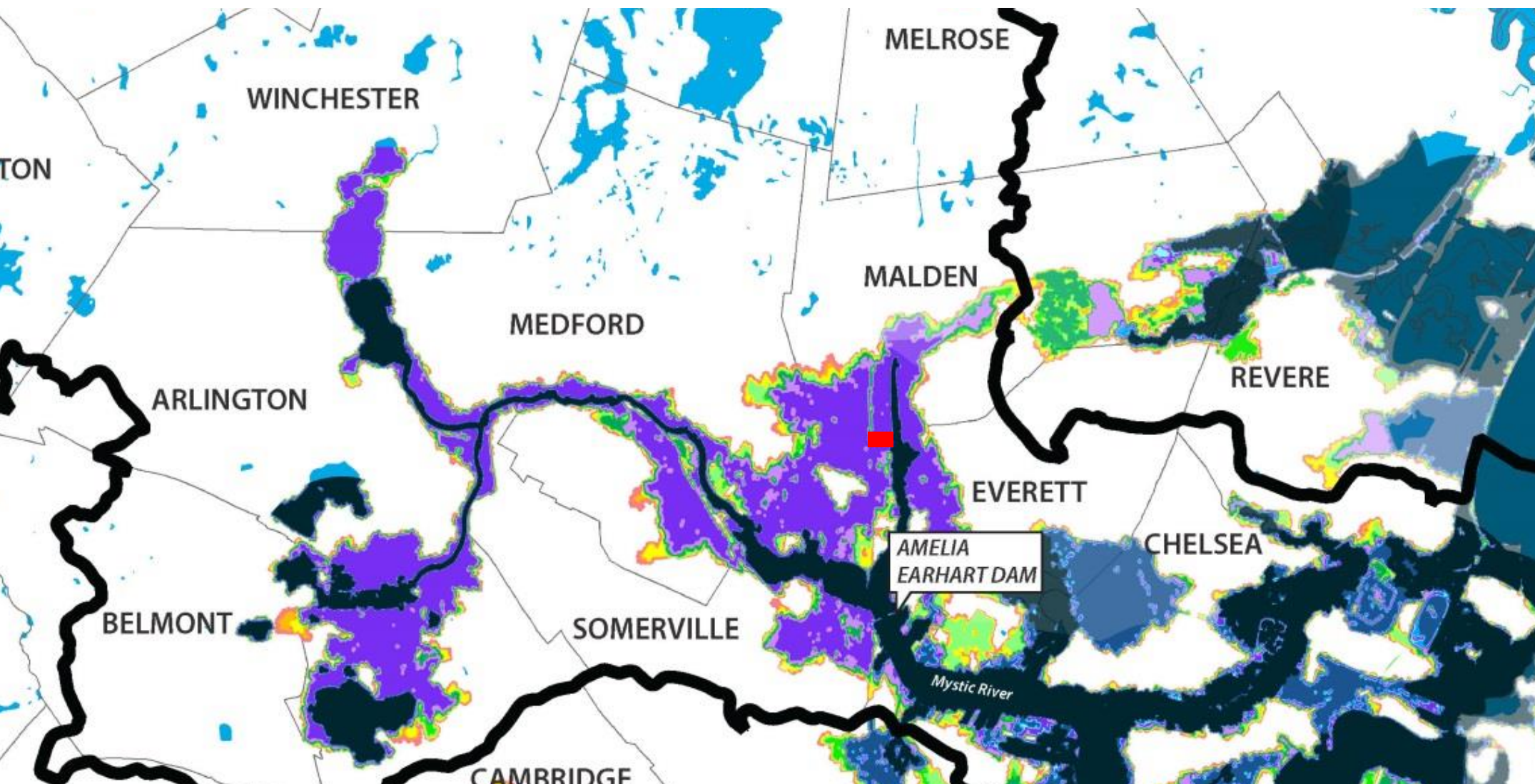
GOAL: CREATE AN EXAMPLE PROJECT THAT CAN BE REPEATED ACROSS THE MALDEN RIVER



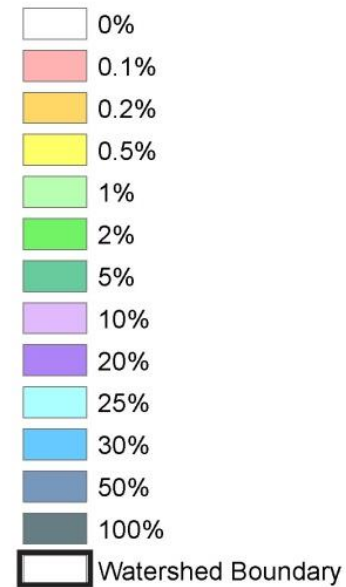
**MALDEN DEPARTMENT OF
PUBLIC WORKS
(‘DPW’) 356 COMMERCIAL ST**



CLIMATE RESILIENCE: PROBABILITY OF COASTAL FLOODING



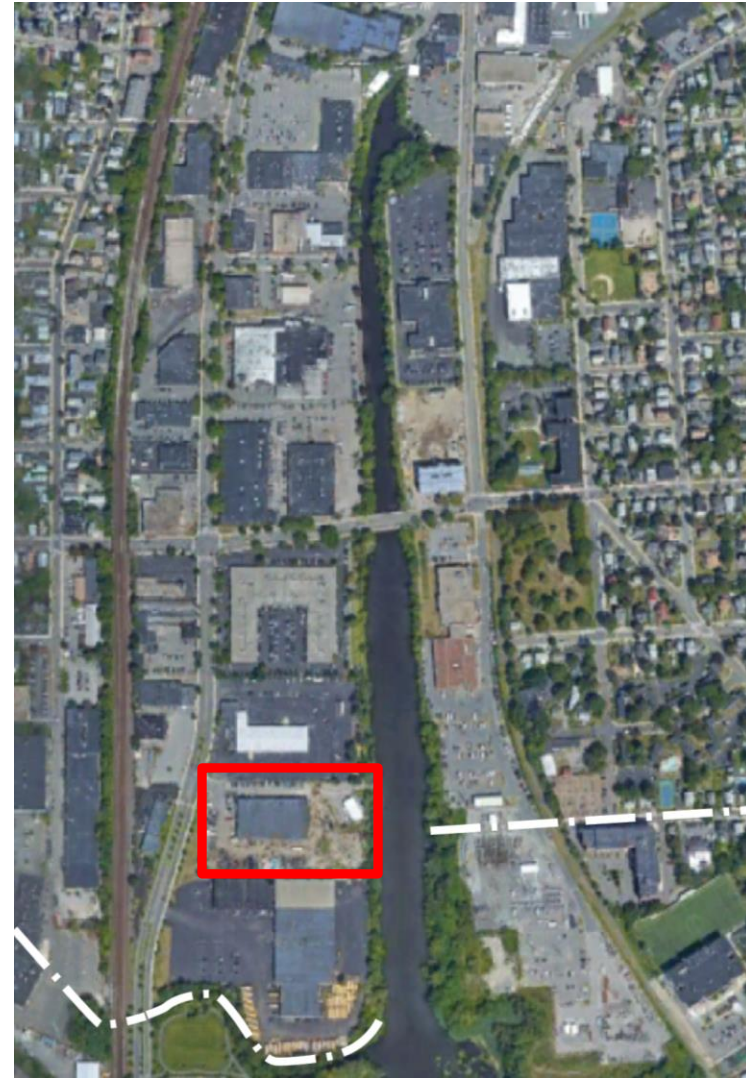
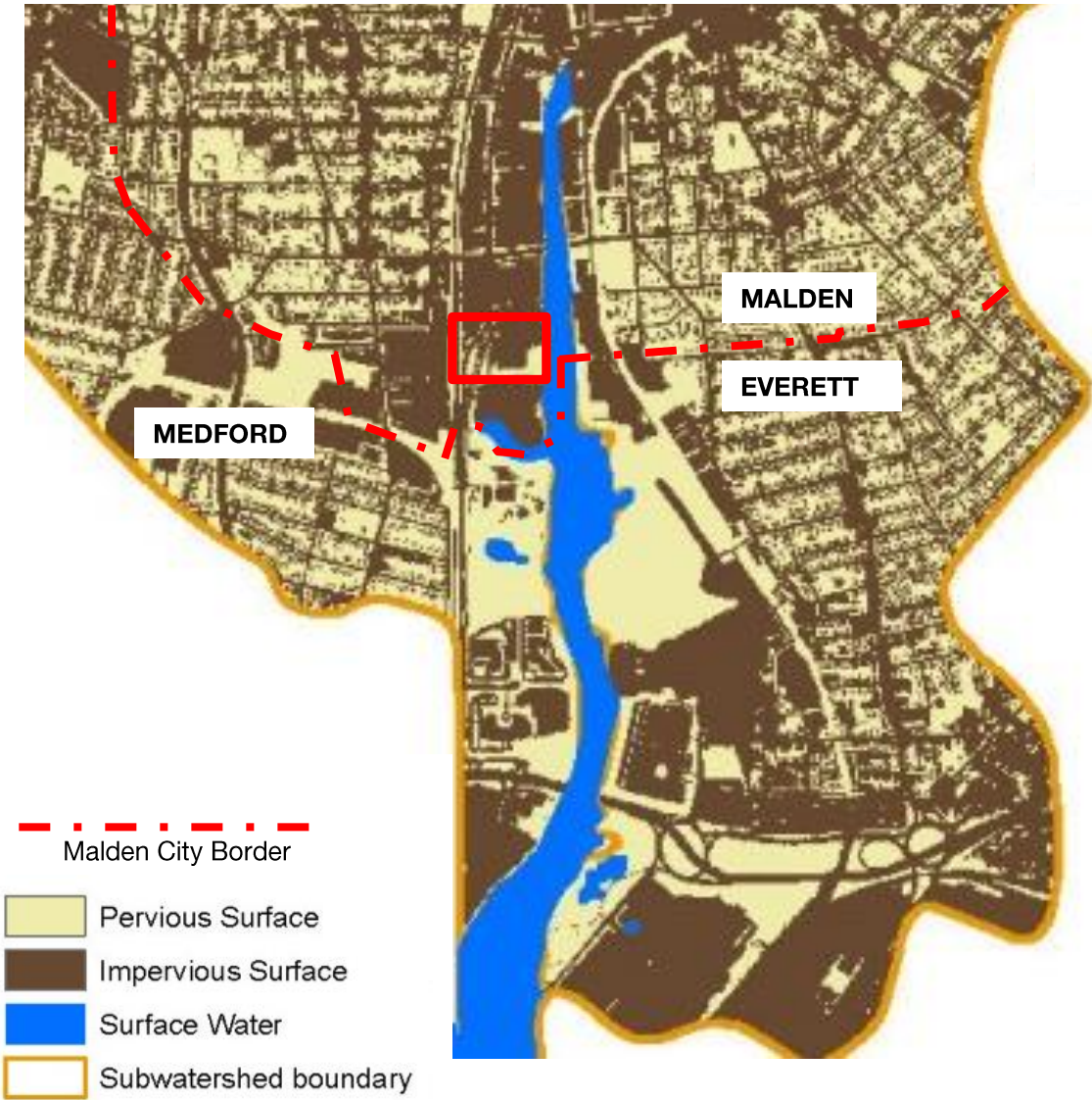
Probability of Flooding



FROM MYSTIC RIVER WATERSHED ASSOCIATION WEBSITE

CLIMATE RESILIENCE: STORM WATER MANAGEMENT

 DEPARTMENT OF PUBLIC WORKS (DPW) – PROJECT SITE



FROM FRIENDS OF THE MALDEN RIVER WEBSITE

In its inaugural year, the Norman B. Leventhal City Prize will solicit novel responses focused on Equitable Resilience. Equitable resilience brings to the forefront questions of inequity when planning, designing, and retrofitting cities for climate change preparations and its future impacts. Making equity a central goal for resilience efforts, we seek proposals from all geographies that aim to develop physical design solutions that “do not reinforce existing inequalities and won’t create new ones.”



MALDEN WORKS: APPROACH TO EQUITABLE RESILIENCE

NORMAN B. LEVENTHAL CITY PRIZE

ABOUT

PRIZE

GOALS

EQUITABLE RESILIENCE

TIMELINE

ELIGIBILITY

INQUIRIES

- **Realize a transformative project: Create a vibrant new civic space along the Malden River**
- **Develop an equitable process: Help to build a new coalition of Malden resident community leaders of color, environmental advocates, and government representatives to work together *in action* to realize transformative social and physical change.**



MALDEN DEPARTMENT OF PUBLIC WORKS (DPW)



PHOTO BY XIO ALVAREZ

CITY SERVICES BY THE DPW INCLUDE:

CITY-WIDE TREE MAINTENANCE AND PLANTING

COLLECTION, TRANSPORTATION AND DISPOSAL OF SOLID WASTE

MAINTENANCE OF PARKS

PAVEMENT MARKING MAINTENANCE

SIGNAGE AND TRAFFIC SIGNALIZATION

SNOW REMOVAL, PLOWING AND SANDING

STORM WATER SYSTEM MAINTENANCE AND DRAINAGE REPAIRS

STREET SWEEPING, UPKEEP, AND REPAIRS TO SIDEWALKS AND STREETS

SOURCE: CITYOFMALDEN.ORG

MALDEN WORKS FOR WATERFRONT EQUITY AND RESILIENCE: THE PLAN

- 1- OPTIMIZE DEPARTMENT OF PUBLIC WORKS OPERATIONS
- 2- CREATE A NEW PUBLIC RIVERFRONT PARK

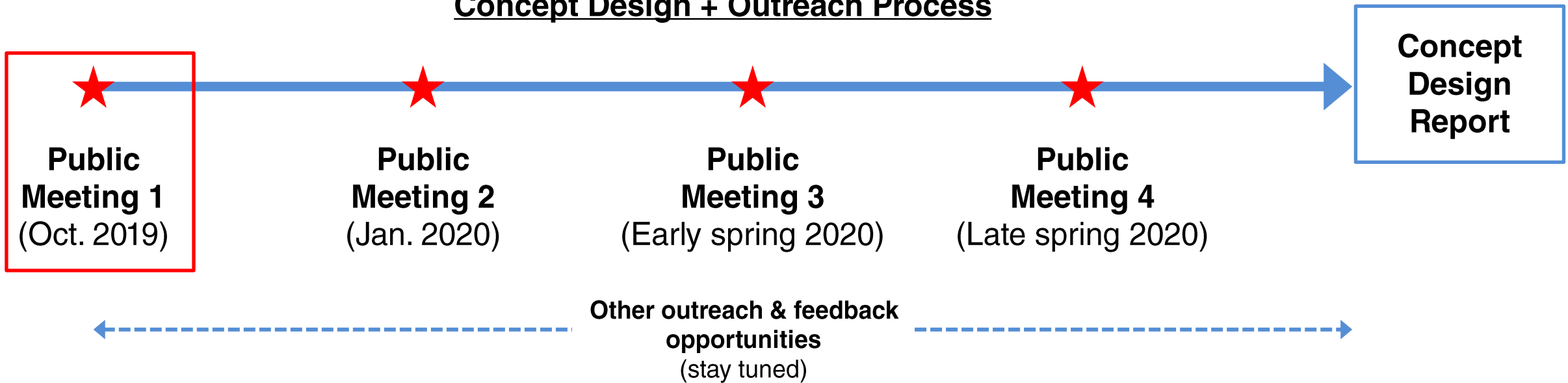


MALDEN WORKS FOR WATERFRONT EQUITY AND RESILIENCE: TIMELINE

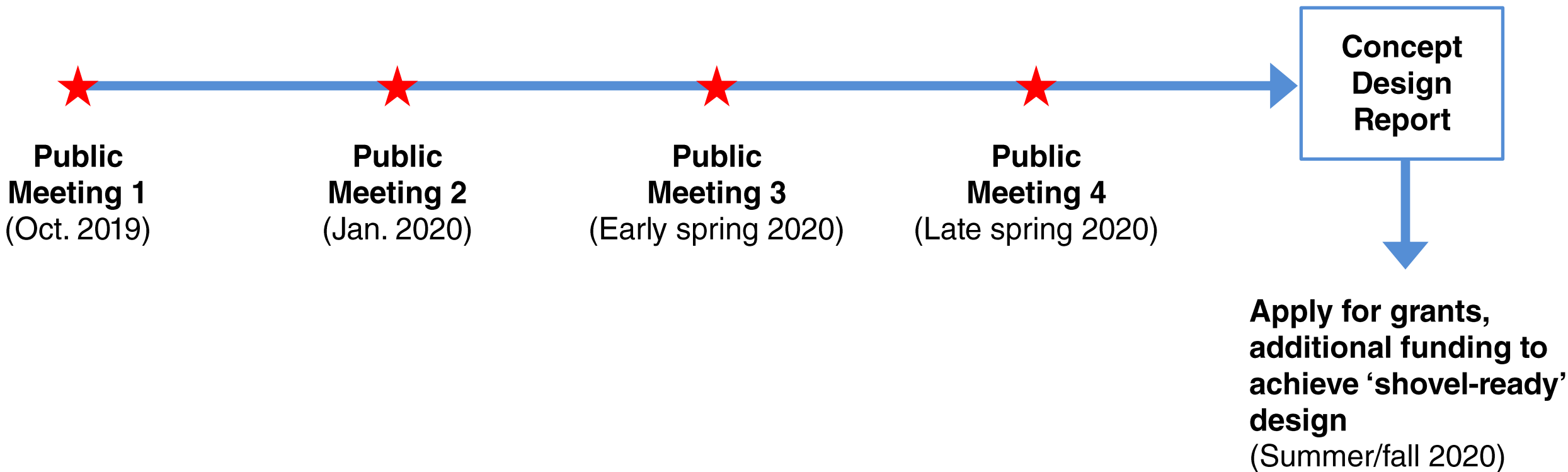
GOALS FOR TONIGHT (Public Meeting 1):

- To better understand initial impressions of the Malden River
- Begin to identify common values or priorities for a new riverfront park

Concept Design + Outreach Process



MALDEN WORKS FOR WATERFRONT EQUITY AND RESILIENCE: TIMELINE



Thank you, and questions?